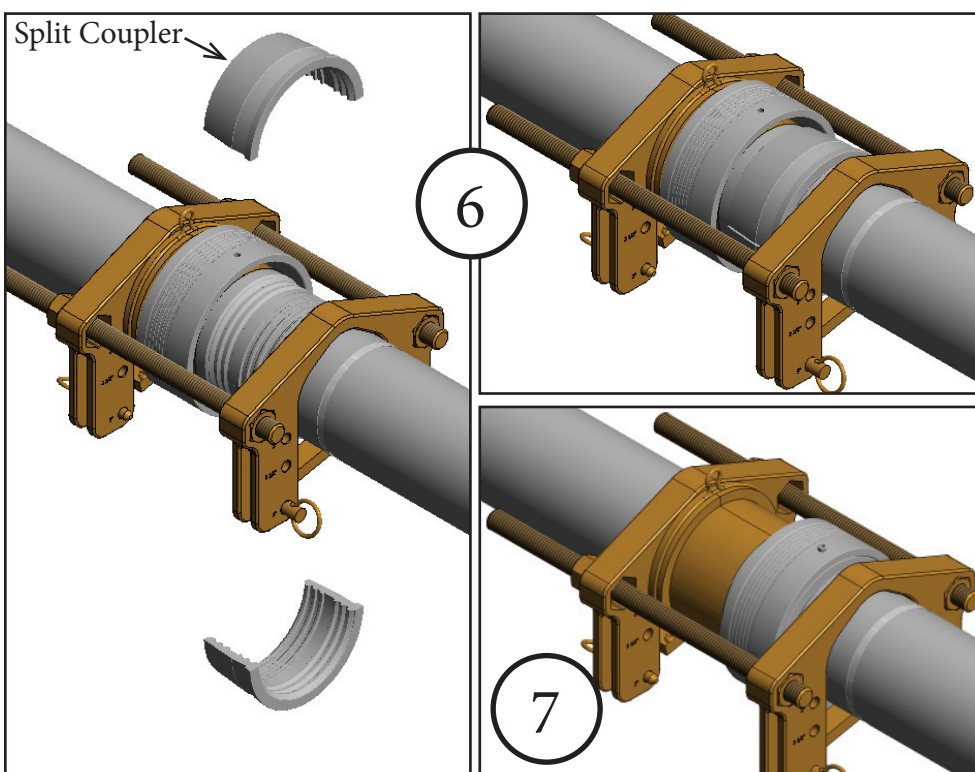
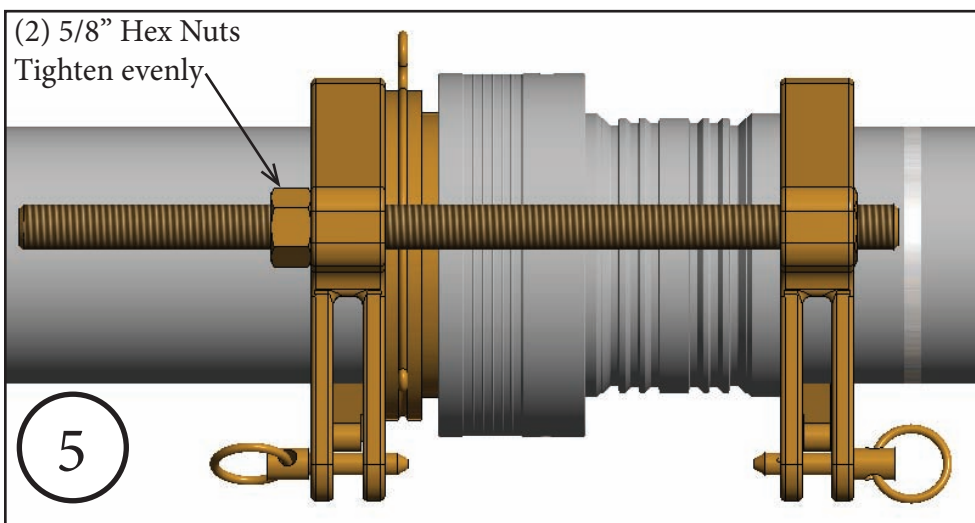
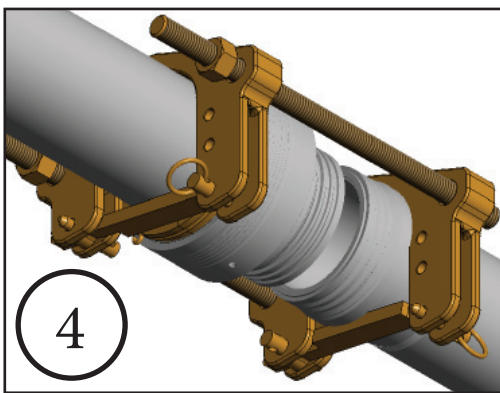
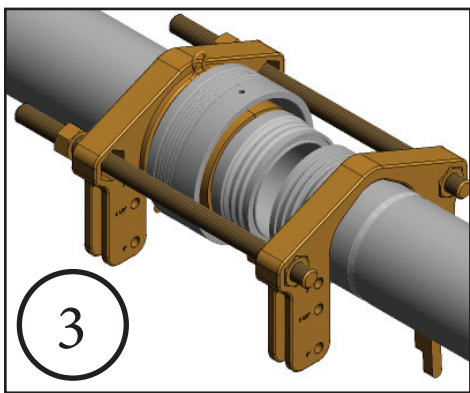
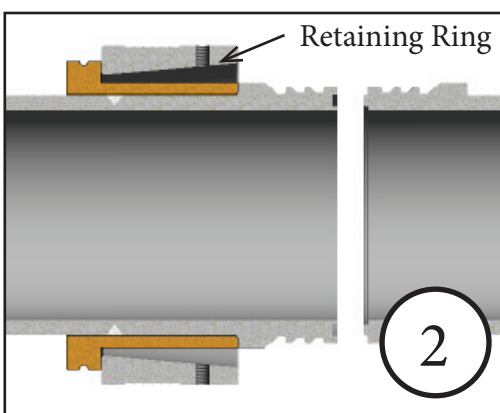
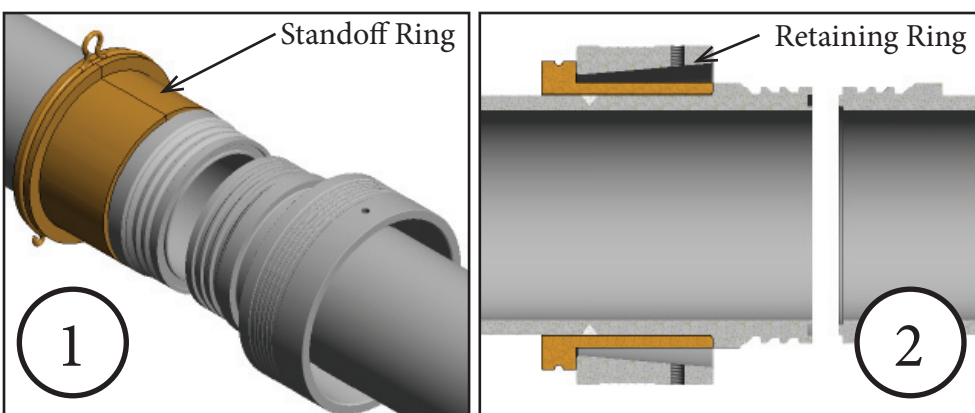
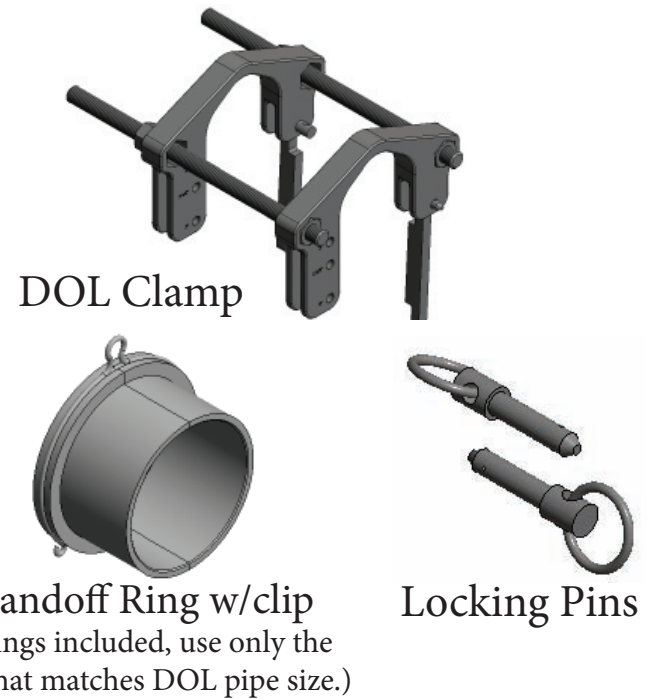
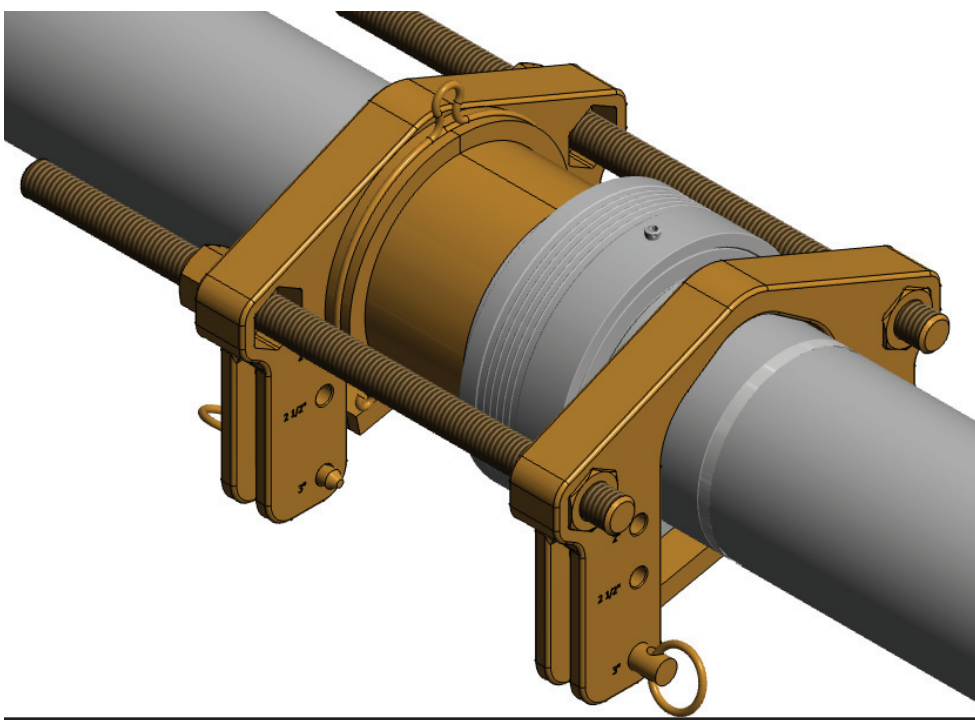


DUR O LOK® Assembly Clamp Instructions



1. Place both halves of Standoff Ring over pipe and butt against DOL hub. Secure in place with provided clip.
2. Move DOL Retaining Ring so that it rests on Standoff Ring. Ensure that the ID taper of Retaining Ring is oriented correctly. Larger ID must be facing coupling.
3. Place DOL Clamp over coupling so yokes are resting on pipe.
4. Lock swing arms in place using provided pins. Locking holes in clamp are labeled for each size of DOL. Be careful to select the appropriate hole.
5. Handtighten the 2 exposed hex nuts until clamp assembly is tight against DOL hubs then wrench tighten *evenly* until DOL hubs contact each other.

6. Install both halves of DOL split couplers and slide retaining ring into place.
7. Install set screws to secure coupling
8. Dis-assemble clamp in reverse order to remove.